

FIRE PROTECTION PRODUCTS



CONTENTS

Gate Valve

Resilient Seated NRS Type-Flanged Ends	1
Indicator Post - Underground Type	2
Indicator Post - Wall Type	3
Resilient Seated OS&Y Type-Flanged Ends	4
Resilient Seated NRS Type- Flange-Groove Ends	5
Resilient Seated NRS Type-Groove-Groove Ends	6
Resilient Seated OS&Y Type-Flange-Groove Ends	7
Resilient Seated OS&Y Type-Groove-Groove Ends	8

Swing Check Valve

Resilient Seated Flanged Ends	10
Resilient Seated Grooved Ends	11
Resilient Seated Wafer Ends	12

Y Strainer

Flanged Ends	14
Flange-Groove Ends	15
Groove-Groove Ends	16

Butterfly Valve

Resilient Seated Wafer Ends	18
Resilient Seated Grooved Ends	19

Company Profile

GALA - Extends Business on a Global Perspective.

GALA company offers a wide range of products and systems in the field of valves, piping, and seismic isolation for applications ranging from equipment for office buildings, fire fighting, heating, water works, sewerage, marine, industrial to top fluid control. Our aim is meaningful contribution to society by providing comfort and safety through our products, technical skills and services!

GALA - Professional Manufacturer of Industrial Valves

GALA have variety products to meet customer demand of different valve. Designing, manufacture and sale of one-stop service is the company's core strengths.

GALA products cover the following industry area:

Water supply system, water treatment, food, chemical, cement, air-conditioning systems, industry engineering, nuclear power, papermaking, Petrochemical Industry, pharmaceutical, Powder Industry, steel industry, sugar refining, textiles and so on. GALA anti-pollution environmental protection industry is one of the major business. GALA provides various valve for wastewater processing and exhaust gas processing.

GALA have wide variety of industrial valves, including following main products:

- ◆ Fire Protection Valve
- ◆ Balancing Valve
- ◆ Butterfly Valve
- ◆ Gate Valve, Globe Valve, Check Valve, Ball Valve
- ◆ Strainer
- ◆ Flexible Rubber Joint
- ◆ Flexible Stainless Steel Hose, Expansion Joint

Other Valves and fittings are also available from GALA.

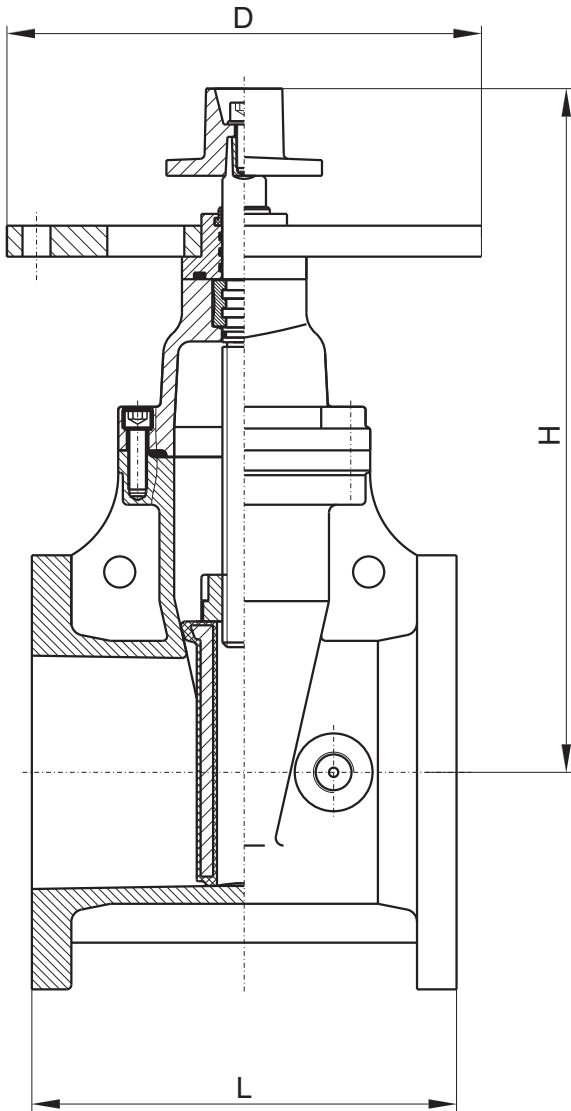
All products will be designed, manufactured and assembly by GALA.



Gate Valve

Resilient Seated NRS Type-Flanged Ends

Fig. 388FF-300
388FF-250
388FF-200



Valve Standard

Conforms to AWWA C515 / BS5163

Working pressure

200PSI / 250PSI / 300PSI

Flanged Ends

ANSI B16.1 Class125/150/250,
EN1092-2 PN10/PN16/PN25
BS10 Table D/Table E

Materials List

Part Name	Material	Specification
Body	Ductile Iron	A536 65-45-12
Wedge Disc	Ductile Iron EPDM Coated	
Disc Nut	Bronze	ASTM B62
Stem	Stainless Steel	AISI 304/302
Gasket	EPDM	Commercial
Bonnet	Ductile Iron	A536 65-45-12
Thrust Collar	Bronze	ASTM B62
Gland	Ductile Iron	A536 65-45-12
Wrench Nut	Ductile Iron	A536 65-45-12
Post Plate	Ductile Iron	A536 65-45-12

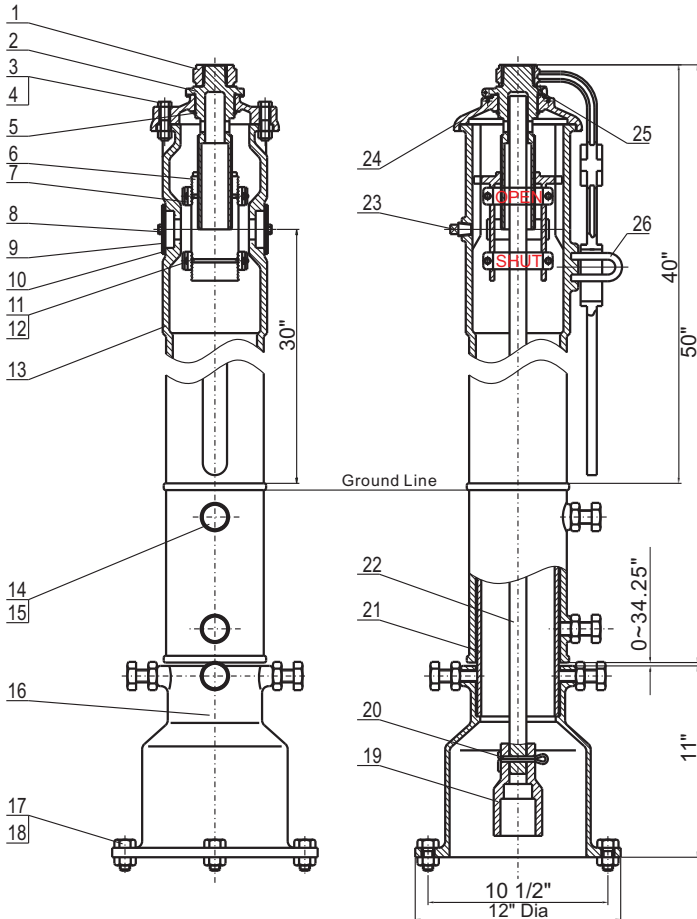
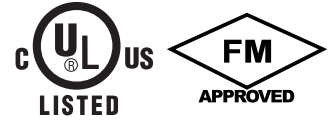
Dimensions(mm/inch):

SIZE	mm	50	65	80	100	125	150	200	250	300
	inch	2	2 ¹ / ₂	3	4	5	6	8	10	12
L	mm	178	191	203	229	254	267	292	330	356
	inch	7.00	7.50	8.00	9.00	10.00	10.50	11.50	13.00	14.00
H	mm	295	295	323	342	408	440	537	640	723
	inch	11.61	11.61	12.72	13.46	16.06	17.32	21.14	25.20	28.46
D	mm	305	305	305	305	305	305	305	305	305
	inch	12.01	12.01	12.01	12.01	12.01	12.01	12.01	12.01	12.01

Gate Valve

Indicator Post - Underground Type

Fig.G388



Materials List

DET	QTY.	Description	Material
1	1	Locking Wrench	ASTM A126B
2	1	Operating Nut	ASTM B62
3	2	Hex Nut Screw	ASTM A105
4	2	Hex Nut	ASTM A105
5	1	Snap Ring	AISI 066
6	1	Target Carrier Nut	ASTM B62
7	4	Target	ASTM B108
8	4	Hex Cap Screw	ASTM A105
9	2	Window Glass	LEXAN-UM
10	2	Window Glass Gasket	PTFE
11	4	Hex Cap Screw	ASTM A105
12	4	Hex Nut	ASTM A105
13	1	Body	ASTM A536
14	6	Hex Cap Screw	ASTM A105
15	6	Hex Nut	ASTM A105
16	1	Base Flange	ASTM A126B
17	4	Hex Cap Screw	ASTM A105
18	4	Hex Nut	ASTM A105
19	1	Crane Coupling	ASTM A536
20	1	Cotter Pin	AISI 304
21	1	Stand Pipe	ASTM A53
22	1	Stem	AISI 1045
23	1	Plug	AISI 304
24	1	Cover	ASTM A126B
25	1	Cross Recessed Countersunk Head Screw	AISI 304
26	1	Locking Nose	ASTM 307 B

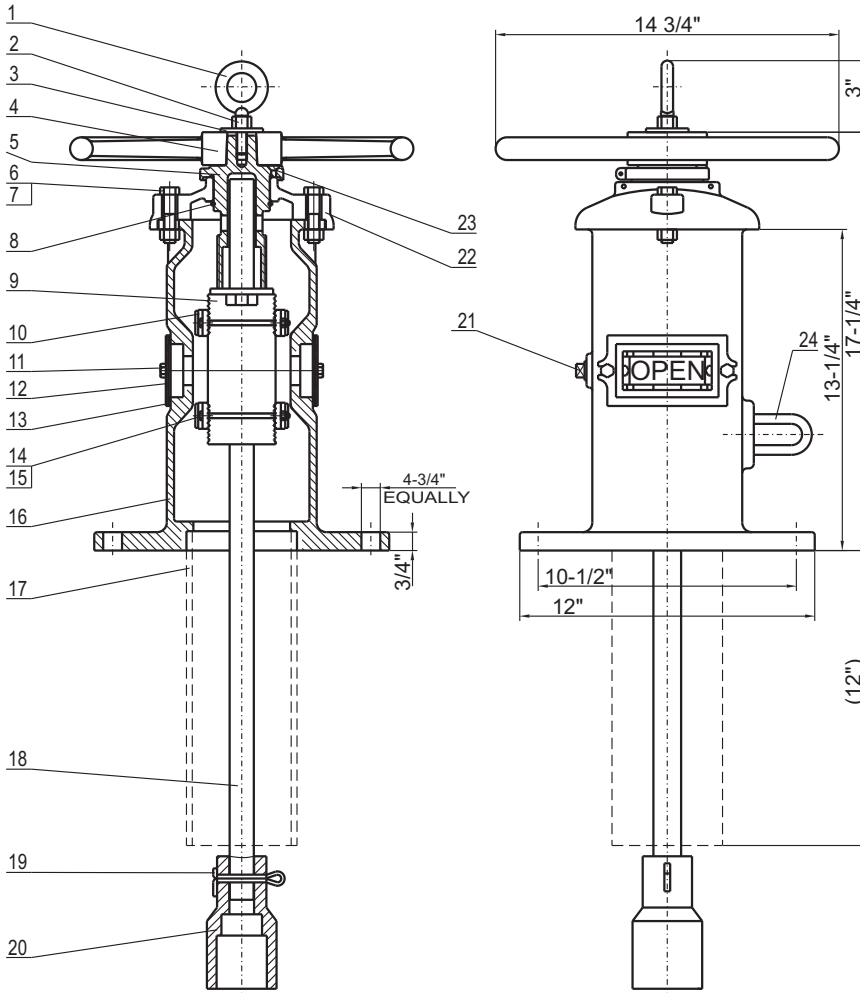
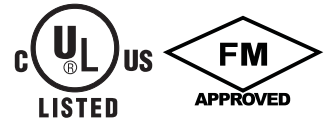
Field Adjustment:

1. Remove the top section from the top of the Indicator Post assembly.
2. Cut the required length off the bottom of the Standpipe for the Ground Line to match up with Standpipe Ground Line mark.
3. Set the "OPEN" and "SHUT" targets for the appropriate valve size.
4. Reattach the Top Section to the top of the Indicator Post assembly.
5. Design and dimensions are subject to change without notice

Gate Valve

Indicator Post - Wall Type

Fig.W388



Field Adjustment:

1. Remove the top section from the top of the Indicator Post assembly.
2. Set the "OPEN" and "SHUT" targets for the appropriate valves size.
3. Reattach the Top Section to the top of the Indicator Post assembly.
4. Design and materials are subject to change without notice.

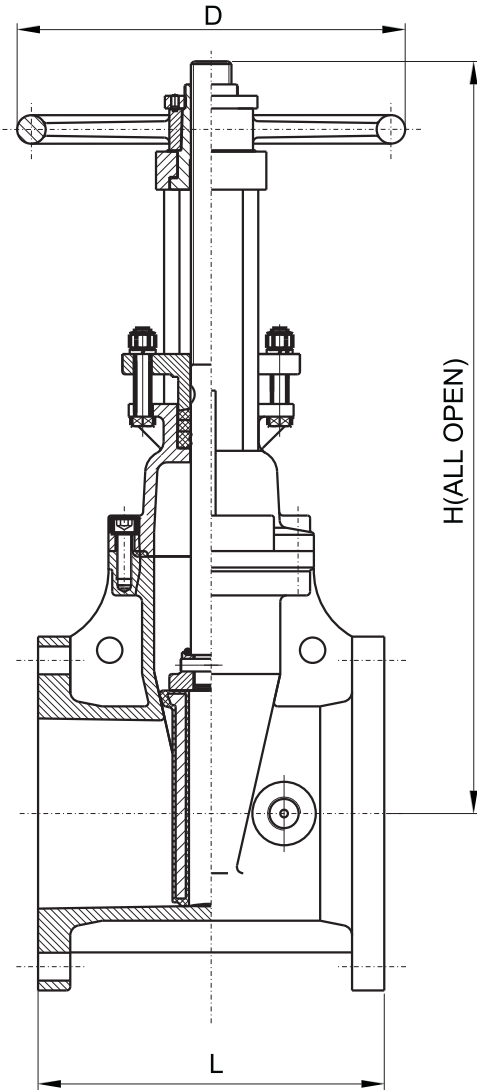
Materials List

DET	QTY.	Description	Material	DET	QTY.	Description	Material
1	1	Lifting Eye Bolt	ASTM A105	13	2	Window Glass Gasket	PTFE
2	1	Hex Nut	ASTM A105	14	4	Hex Cap Screw	ASTM A105
3	1	Washer	ASTM A105	15	4	Hex Nut	ASTM A105
4	1	Hand Wheel	ASTM A536	16	1	Body	ASTM A536
5	1	Operating Nut	ASTM B62	17	1	Stand Pipe	ASTM A53
6	2	Hex Cap Screw	ASTM A105	18	1	Stem	AISI 1045
7	2	Hex Nut	ASTM A105	19	1	Cotter Pin	AISI 304
8	1	Snap Ring	AISI 066	20	1	Crane Coupling	ASTM A536
9	1	Target Carrier Nut	ASTM B62	21	1	Plug	AISI 304
10	4	Target	ASTM B108	22	1	Cover	ASTM A126B
11	4	Hex Cap Screw	ASTM A105	23	1	Cross Recessed Countersunk Head Screw	AISI 304
12	2	Window Glass	LEXAN-UM	24	1	Locking Nose	ASTM A307B

Gate Valve

Resilient Seated OS&Y Type-Flanged Ends

Fig. 399FF-300
399FF-250
399FF-200



Valve Standard

Conforms to AWWA C515 / BS5163

Working pressure

200PSI / 250PSI / 300PSI

Flanged Ends

ANSI B16.1 Class125/150/250,
EN1092-2 PN10/PN16/PN25
BS10 Table D/Table E

Materials List

Part Name	Material	Specification
Body	Ductile Iron	A536 65-45-12
Wedge	Ductile Iron EPDM Coated	
Wedge Nut	Stainless Steel	AISI304
Stem	Stainless Steel	AISI304/302
Bonnet	Ductile Iron	A536 65-45-12
Gasket	EPDM	Commercial
Packing	Graphite	Non-asbestos
Stem Nut	Bronze	ASTM B62
Handwheel	Ductile Iron	A536 65-45-12

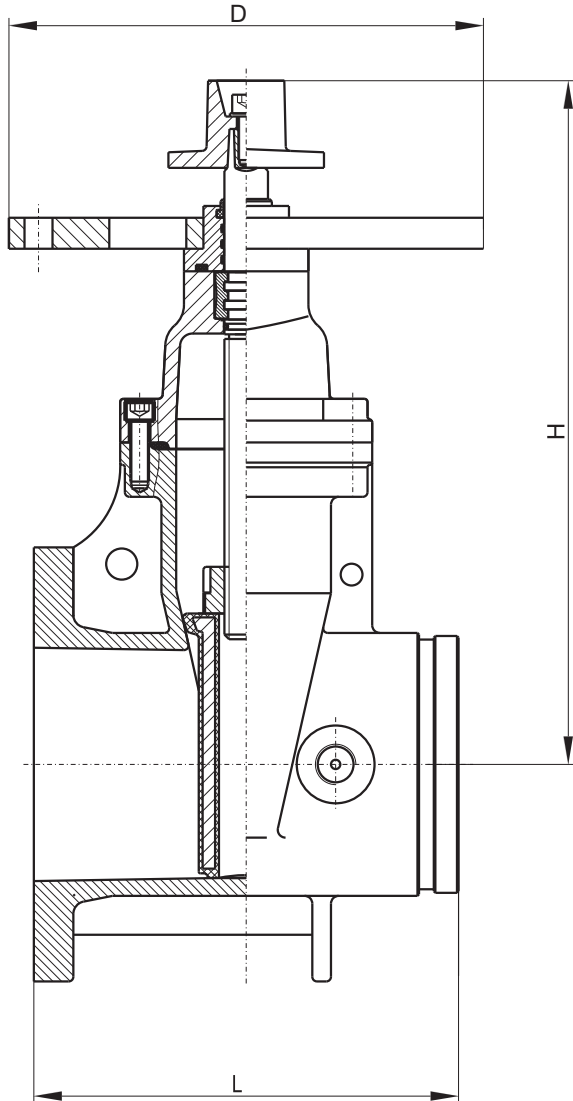
Dimensions(mm/inch):

SIZE	mm	50	65	80	100	125	150	200	250	300
	inch	2	2½	3	4	5	6	8	10	12
L	mm	178	191	203	229	254	267	292	330	356
	inch	7.00	7.50	8.00	9.00	10.00	10.50	11.50	13.00	14.00
H	mm	418	418	488	538	654	740	935	1126	1316
	inch	16.46	16.46	19.21	21.18	25.75	29.13	36.81	44.33	51.81
D	mm	183	183	253	253	306	306	355	445	445
	inch	7.20	7.20	9.96	9.96	12.05	12.05	13.98	17.52	17.52

Gate Valve

Resilient Seated NRS Type-Flange-Groove Ends

Fig. 388FG-300
388FG-250
388FG-200



Valve Standard

Conforms to AWWA C515 / BS5163

Working pressure

200PSI / 250PSI / 300PSI

Flanged Ends

ANSI B16.1 Class125/150/250,
EN1092-2 PN10/PN16/PN25
BS10 Table D/Table E
AWWA C 606

Materials List

Part Name	Material	Specification
Body	Ductile Iron	A536 65-45-12
Wedge Disc	Ductile Iron EPDM Coated	
Disc Nut	Bronze	ASTM B62
Stem	Stainless Steel	AISI 304/302
Gasket	EPDM	Commercial
Bonnet	Ductile Iron	A536 65-45-12
Thrust Collar	Bronze	ASTM B62
Gland	Ductile Iron	A536 65-45-12
Wrench Nut	Ductile Iron	A536 65-45-12
Post Plate	Ductile Iron	A536 65-45-12

Dimensions(mm/inch):

SIZE	mm	50	65	80	100	125	150	200	250	300
	inch	2	2 ¹ / ₂	3	4	5	6	8	10	12
L	mm	178	191	203	229	254	267	292	330	356
	inch	7.00	7.50	8.00	9.00	10.00	10.50	11.50	13.00	14.00
H	mm	295	295	323	342	408	440	537	640	723
	inch	11.61	11.61	12.72	13.46	16.06	17.32	21.14	25.20	28.46
D	mm	305	305	305	305	305	305	305	305	305
	inch	12.01	12.01	12.01	12.01	12.01	12.01	12.01	12.01	12.01

Gate Valve

Resilient Seated NRS Type-Groove-Groove Ends

Fig. 388GG-300
388GG-250
388GG-200



Valve Standard

Conforms to AWWA C515 / BS5163

Working pressure

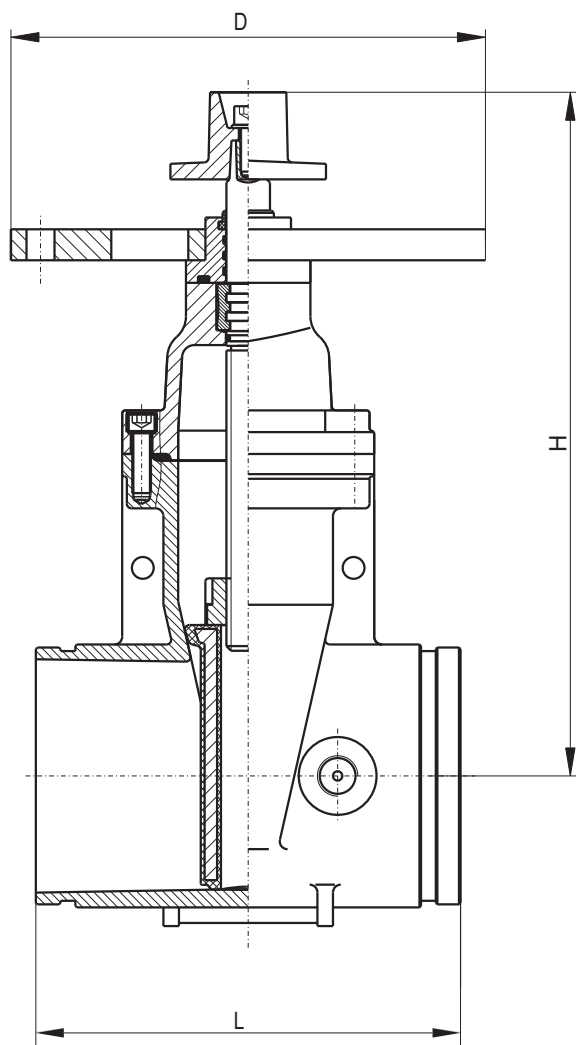
200PSI / 250PSI / 300PSI

Flanged Ends

AWWA C 606

Materials List

Part Name	Material	Specification
Body	Ductile Iron	A536 65-45-12
Wedge Disc	Ductile Iron EPDM Coated	
Disc Nut	Bronze	ASTM B62
Stem	Stainless Steel	AISI 304/302
Gasket	EPDM	Commercial
Bonnet	Ductile Iron	A536 65-45-12
Thrust Collar	Bronze	ASTM B62
Gland	Ductile Iron	A536 65-45-12
Wrench Nut	Ductile Iron	A536 65-45-12
Post Plate	Ductile Iron	A536 65-45-12



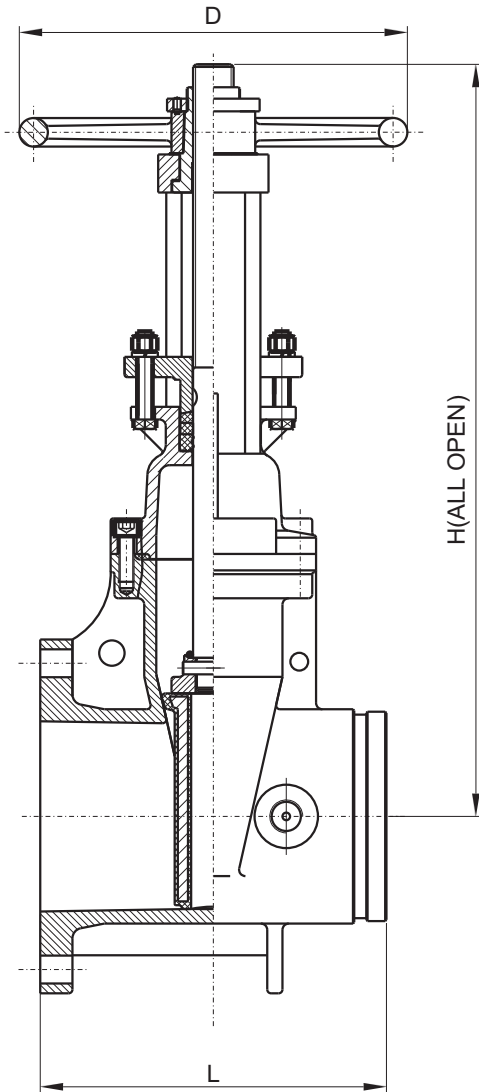
Dimensions(mm/inch):

SIZE	mm	50	65	80	100	125	150	200	250	300
	inch	2	2 1/2	3	4	5	6	8	10	12
L	mm	178	191	203	229	254	267	292	330	356
	inch	7.00	7.50	8.00	9.00	10.00	10.50	11.50	13.00	14.00
H	mm	295	295	323	342	408	440	537	640	723
	inch	11.61	11.61	12.72	13.46	16.06	17.32	21.14	25.20	28.46
D	mm	305	305	305	305	305	305	305	305	305
	inch	12.01	12.01	12.01	12.01	12.01	12.01	12.01	12.01	12.01

Gate Valve

Resilient Seated OS&Y Type-Flange-Groove Ends

Fig. 399FG-300
399FG-250
399FG-200



Valve Standard

Conforms to AWWA C515 / BS5163

Working pressure

200PSI / 250PSI / 300PSI

Flanged Ends

ANSI B16.1 Class125/150/250,
EN1092-2 PN10/PN16/PN25
BS10 Table D/Table E
AWWA C 606

Materials List

Part Name	Material	Specification
Body	Ductile Iron	A536 65-45-12
Wedge	Ductile Iron EPDM Coated	
Wedge Nut	Stainless Steel	AISI304
Stem	Stainless Steel	AISI304/302
Bonnet	Ductile Iron	A536 65-45-12
Gasket	EPDM	Commercial
Packing	Graphite	Non-asbestos
Stem Nut	Bronze	ASTM B62
Handwheel	Ductile Iron	A536 65-45-12

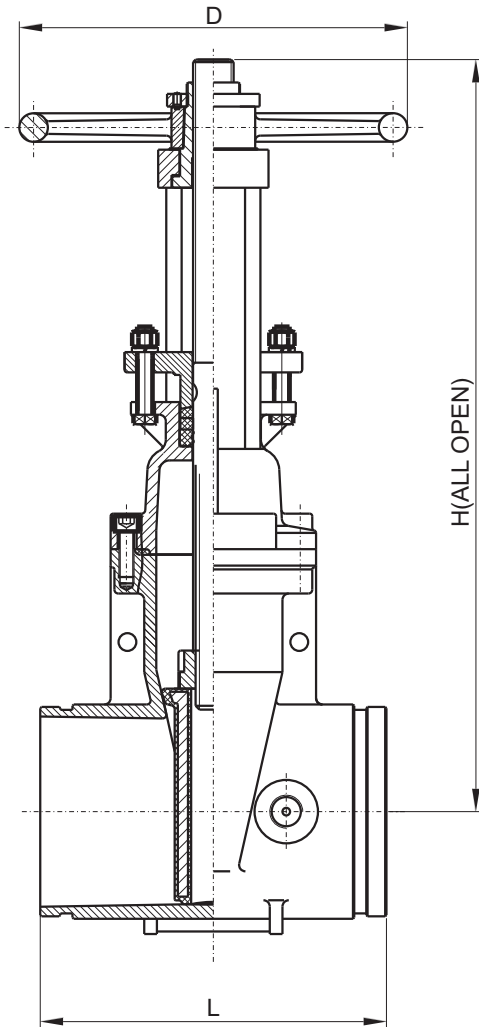
Dimensions(mm/inch):

SIZE	mm	50	65	80	100	125	150	200	250	300
	inch	2	2½	3	4	5	6	8	10	12
L	mm	178	191	203	229	254	267	292	330	356
	inch	7.00	7.50	8.00	9.00	10.00	10.50	11.50	13.00	14.00
H	mm	418	418	488	538	654	740	935	1126	1316
	inch	16.46	16.46	19.21	21.18	25.75	29.13	36.81	44.33	51.81
D	mm	183	183	253	253	306	306	355	445	445
	inch	7.20	7.20	9.96	9.96	12.05	12.05	13.98	17.52	17.52

Gate Valve

Resilient Seated OS&Y Type-Groove-Groove Ends

Fig. 399GG-300
399GG-250
399GG-200



Valve Standard

Conforms to AWWA C515 / BS5163

Working pressure

200PSI / 250PSI / 300PSI

Flanged Ends

AWWA C 606

Materials List

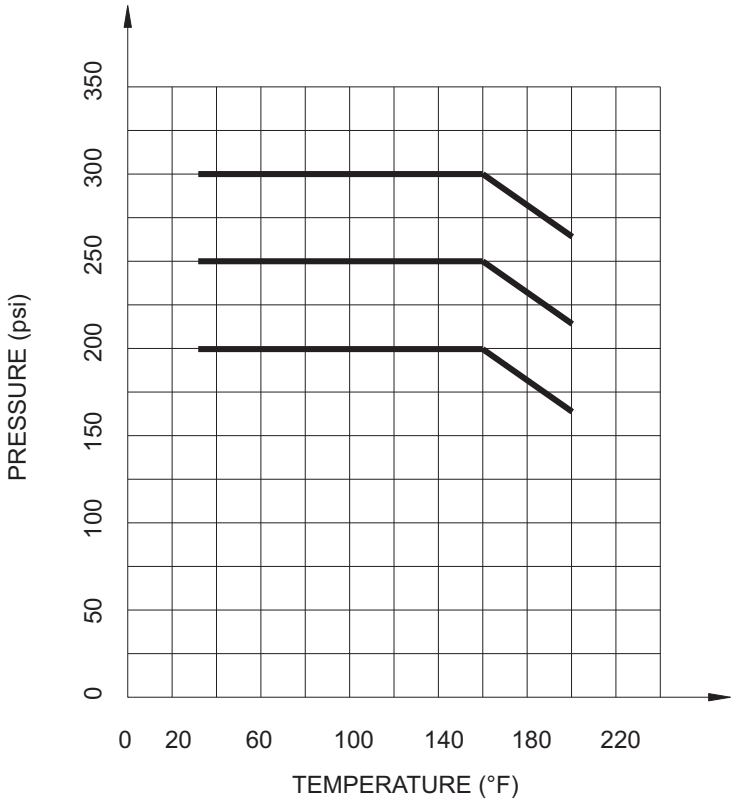
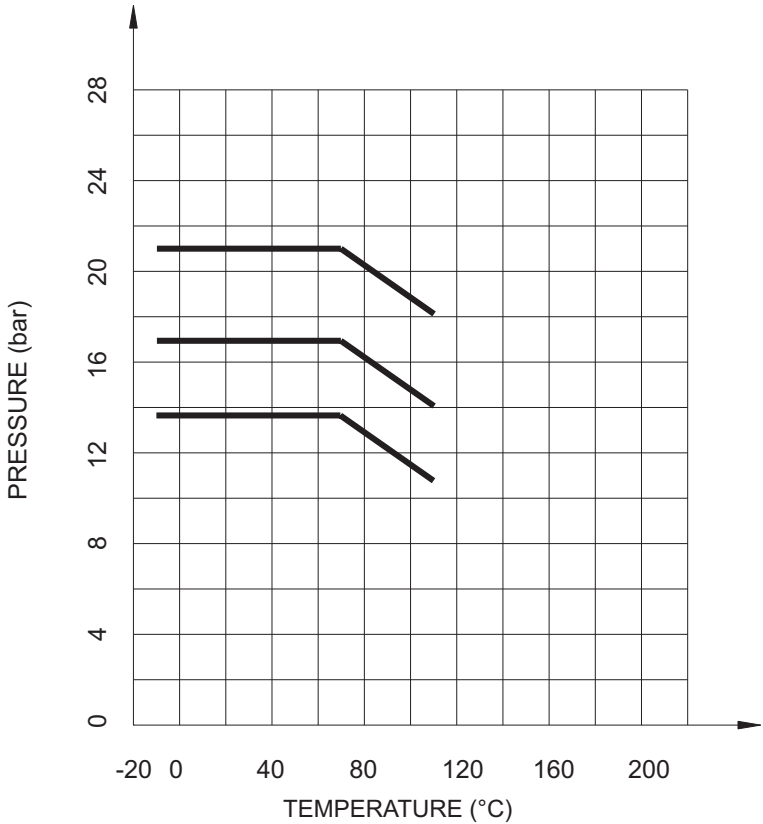
Part Name	Material	Specification
Body	Ductile Iron	A536 65-45-12
Wedge	Ductile Iron EPDM Coated	
Wedge Nut	Stainless Steel	AISI304
Stem	Stainless Steel	AISI304/302
Bonnet	Ductile Iron	A536 65-45-12
Gasket	EPDM	Commercial
Packing	Graphite	Non-asbestos
Stem Nut	Bronze	ASTM B62
Handwheel	Ductile Iron	A536 65-45-12

Dimensions(mm/inch):

SIZE	mm	50	65	80	100	125	150	200	250	300
	inch	2	2 ¹ / ₂	3	4	5	6	8	10	12
L	mm	178	191	203	229	254	267	292	330	356
	inch	7.00	7.50	8.00	9.00	10.00	10.50	11.50	13.00	14.00
H	mm	418	418	488	538	654	740	935	1126	1316
	inch	16.46	16.46	19.21	21.18	25.75	29.13	36.81	44.33	51.81
D	mm	183	183	253	253	306	306	355	445	445
	inch	7.20	7.20	9.96	9.96	12.05	12.05	13.98	17.52	17.52

Gate Valve

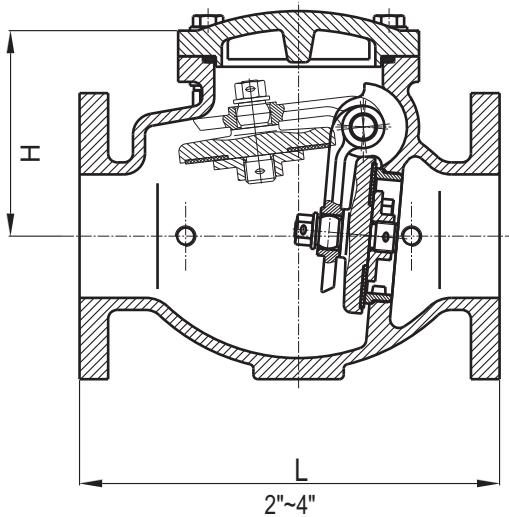
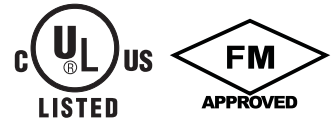
Pressure-Temperature Chart



Swing Check Valve

Resilient Seated Flanged Ends

Fig. 50FF-300
50FF-250
50FF-200



Valve Standard

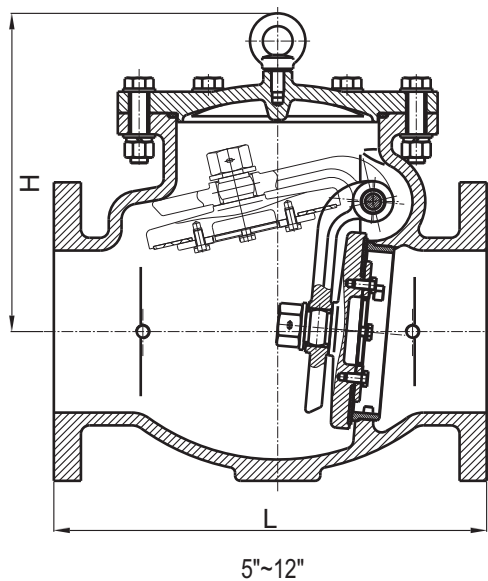
Conforms to AWWA C508, Clear Waterway

Working pressure

200PSI / 250PSI / 300PSI

Flanged Ends

ANSI B16.1 Class125/150/250,
EN1092-2 PN10/PN16/PN25
BS10 Table D/Table E



Materials List

Part Name	Material	Specification
Body	Ductile Iron	A536 65-45-12
Cover	Ductile Iron	A536 65-45-12
Clapper	Ductile Iron	A536 65-45-12
Clapper Arm	Ductile Iron	A536 65-45-12
Seat Ring	EPDM	
Hinge Pin	Stainless Steel	AISI 304
Retainer Washer	Bronze	ASTM B62

Dimensions(mm/inch)

SIZE	mm	50	65	80	100	125	150	200	250	300
	inch	2	2 1/2	3	4	5	6	8	10	12
L	mm	203	254	279	330	356	406	495	559	660
	inch	8	10	11	13	14	16	19.5	22	26
H	mm	122	133	136.5	162.5	296	298.5	357	410	463
	inch	4.80	5.23	5.37	6.40	11.65	11.75	14.06	16.14	18.31

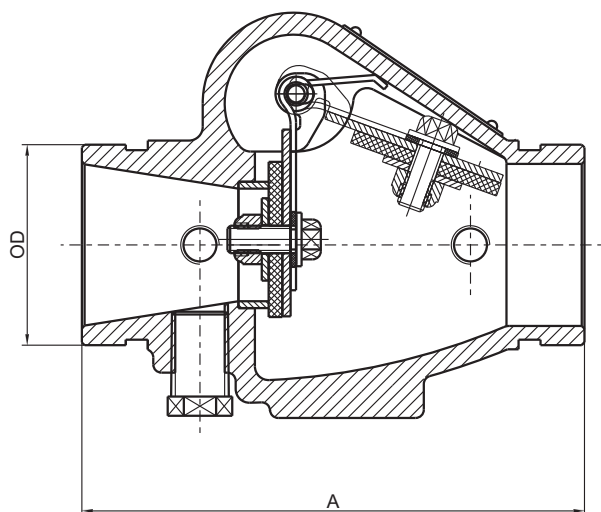
Swing Check Valve

Resilient Seated Grooved Ends

Fig. 50GG-300
50GG-250
50GG-200

Working pressure
200PSI / 250PSI / 300PSI

Flanged Ends
AWWA C 606



Materials List

Part Name	Material	ASTM Specification
Body	Ductile Iron	A536 65-45-12
Seat	Bronze	ASTM B62
Clapper	Stainless Steel	AISI 304
Facing Seal	EPDM Rubber	
Clamping Ring	Stainless Steel	AISI 304
Gasket	EPDM Rubber	
Spring	Stainless Steel	AISI 304
Hinge Pin	Stainless Steel	AISI 304
Bolt	Stainless Steel	AISI 304
Lockmul	Stainless Steel	AISI 304
Plug 1/4" NPT	Carbon Steel	
Plug 1/2" NPT	Carbon Steel	

Dimensions(mm/inch)

SIZE	mm	50	65	80	100	125	150	200
	inch	2	2 ¹ / ₂	3	4	5	6	8
L	mm	169	183	198	218	248	270	325
	inch	6.65	7.20	7.80	8.58	9.76	10.63	12.80
OD	mm	60.3	73.0/76.1	88.9	114.3	139.7/141.3	165.1/168.3	219.1

Check Valve

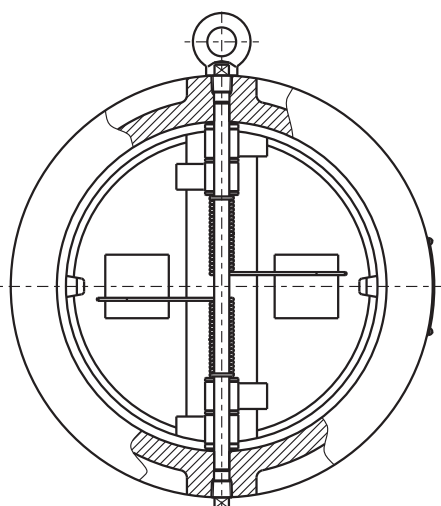
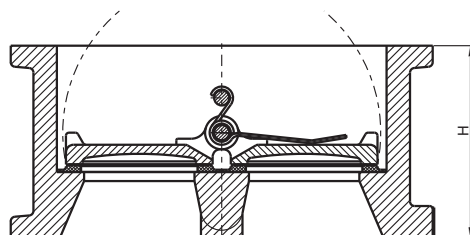
Resilient Seated Wafer Ends

Fig. 50W-300
50W-250
50W-200

Valve Standard
Conforms to API 594

Working pressure
200PSI / 250PSI / 300PSI

Flanged Ends
ANSI B16.1 Class125/150/250,
EN1092-2 PN10/PN16/PN25
BS10 Table E



Materials List

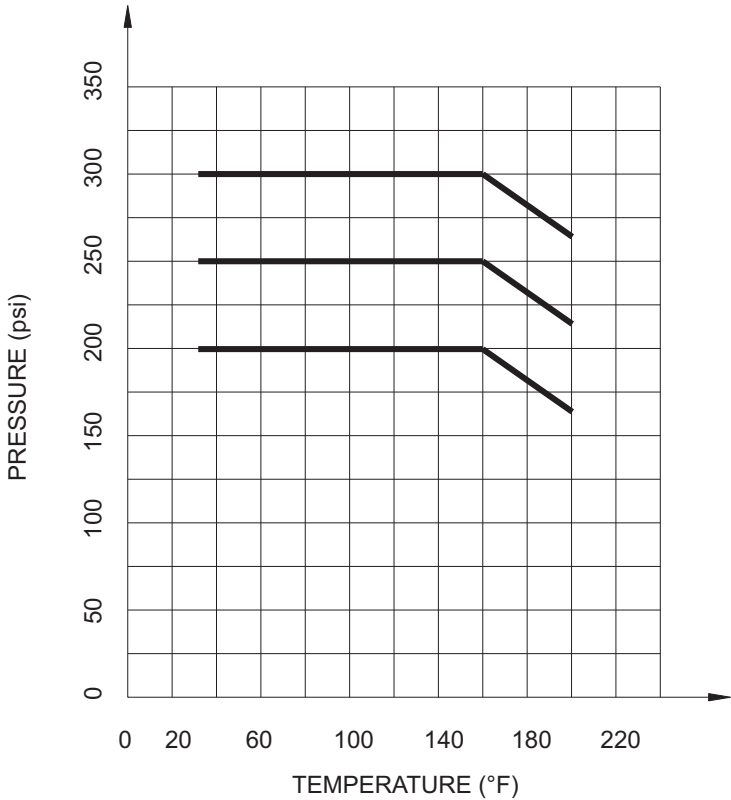
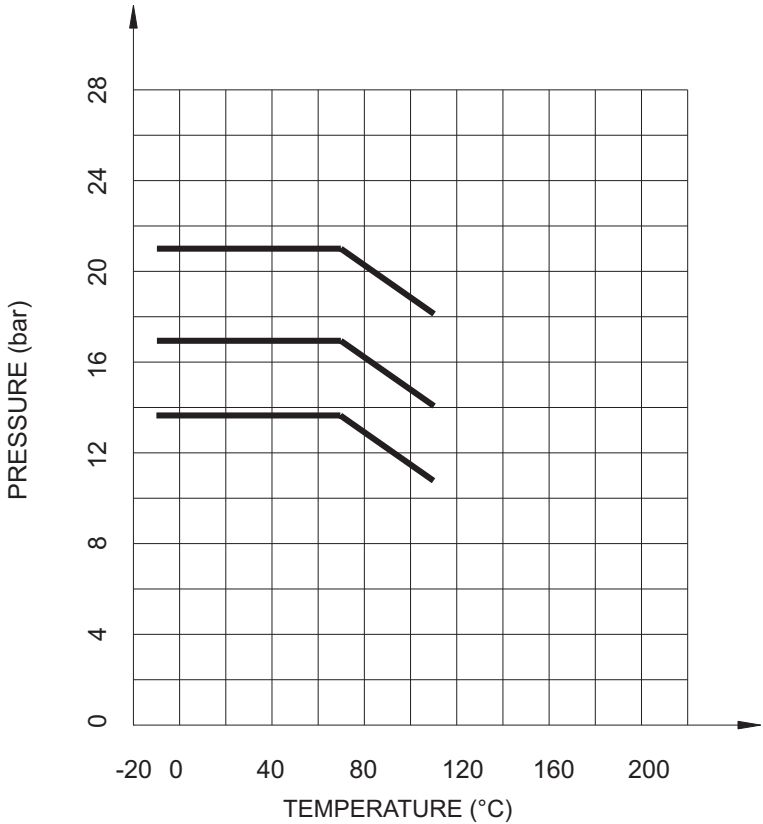
Part Name	Material	ASTM Specification
Seat Ring	Bronze	ASTM B62
Plug Washer	PTFE	Commercial
Hinge Pin	Stainless Steel	AISI 304
Retainer Washer	Bronze	ASTM B62
Disc	Ductile Iron	A536 65-45-12
Clapper Arm	Ductile Iron	A536 65-45-12
Gasket	EPDM	Commercial
Cover	Ductile Iron	A536 65-45-12
Body	Ductile Iron	A536 65-45-12

Dimensions(mm/inch)

SIZE	mm	50	65	80	100	125	150	200	250	300	
	inch		2	2 ¹ / ₂	3	4	5	6	8	10	12
H	mm		54	60	67	67	83	95	127	140	181
	inch		2.13	2.36	2.64	2.64	3.27	3.74	5.00	5.51	7.13

Check Valve

Pressure-Temperature Chart



Y Strainer

Flange-Flange Ends

Fig. 70FF-300
70FF-250
70FF-200

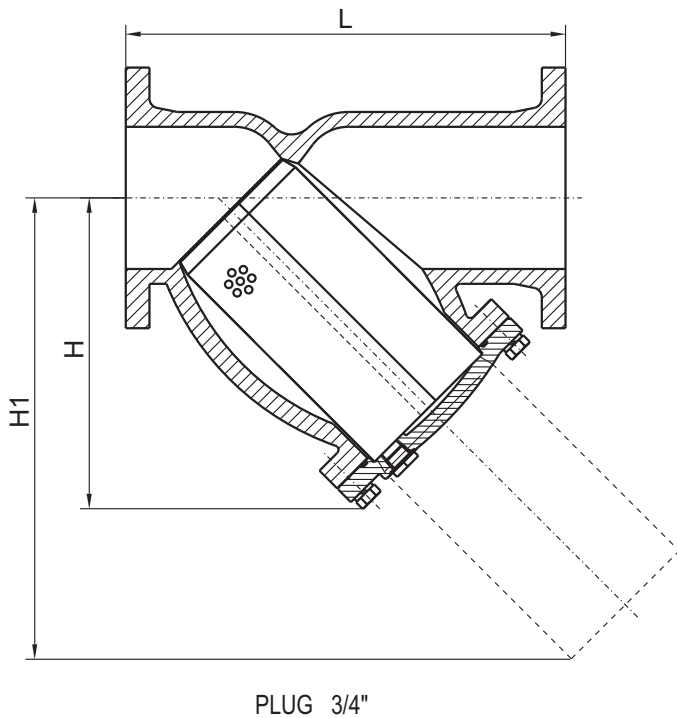


Working pressure
200PSI / 250PSI / 300PSI

Flanged Ends
ANSI B16.1 Class125/150/250,
EN1092-2 PN10/PN16/PN25
BS10 Table D/Table E

Materials List

Component	Material	Specification
Body	Ductile Iron	A536 65-45-12
Cover	Ductile Iron	A536 65-45-12
Screen	Stainless Steel	AISI 304
Gasket	EPDM	
Plug	Carbon Steel	



Dimensions(mm/inch)

SIZE	mm	50	65	80	100	125	150	200	250	300
	inch	2	2 ¹ / ₂	3	4	5	6	8	10	12
L	mm	203	254	260	308	398	472	550	654	762
	inch	7.99	10	10.24	12.13	15.67	18.58	21.65	25.75	30
H	mm	132	158	175	202	290	334	391	460	590
	inch	5.20	6.22	6.89	7.99	11.42	13.15	15.39	18.11	23.23
H1	mm	195	240	270	320	425	495	570	700	840
	inch	7.68	9.45	10.63	12.60	16.73	19.49	22.44	27.56	33.07

Y Strainer

Flange-Groove Ends

Fig. 70FG-300
70FG-250
70FG-200

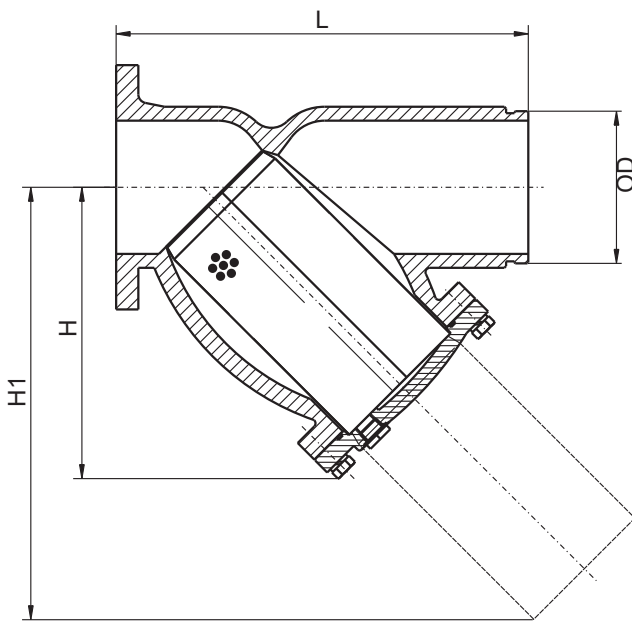


Working pressure
200PSI / 250PSI / 300PSI

Flanged Ends
ANSI B16.1 Class125/150/250,
EN1092-2 PN10/PN16/PN25
BS10 Table D/Table E
AWWA C 606

Materials List

Component	Material	Specification
Body	Ductile Iron	A536 65-45-12
Cover	Ductile Iron	A536 65-45-12
Screen	Stainless Steel	AISI 304
Gasket	EPDM	
Plug	Carbon Steel	



PLUG 3/4"

Dimensions(mm/inch)

SIZE	mm	50	65	80	100	125	150	200	250	300
	inch	2	2 ¹ / ₂	3	4	5	6	8	10	12
L	mm	203	254	260	308	398	472	550	654	762
	inch	8	10	10.24	12.13	15.67	18.58	21.65	25.75	30
H	mm	130	158	175	202	290	334	391	460	590
	inch	5.12	6.22	6.89	7.95	11.42	13.15	15.39	18.11	23.23
H1	mm	195	240	270	320	425	495	570	700	840
	inch	7.68	9.45	10.63	12.60	16.73	19.49	22.44	27.56	33.07
OD	mm	60.3	73.0/76.1	88.9	114.3	139.7/141.3	165.1/168.3	219.1	273	323.9
	inch	2.37	2.87/3	3.50	4.5	5.5/5.56	6.5/6.63	8.63	10.75	12.75

Y Strainer

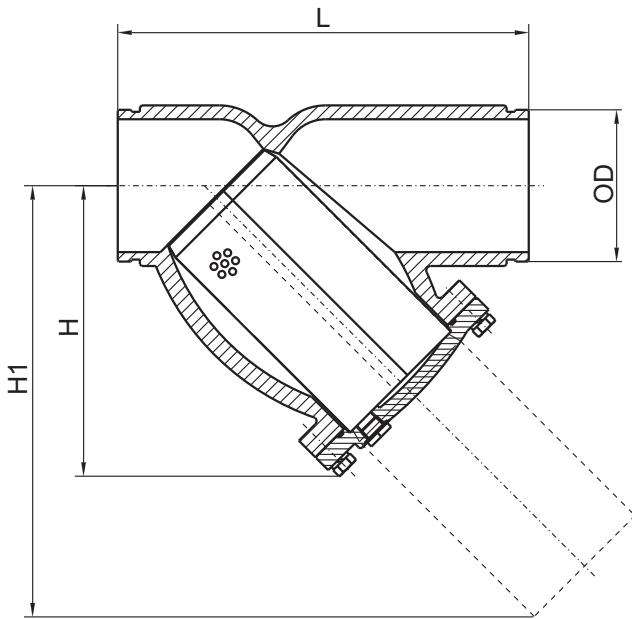
Groove-Groove Ends

Fig. 70GG-300
70GG-250
70GG-200



Working pressure
200PSI / 250PSI / 300PSI

Flanged Ends
AWWA C 606



PLUG 3/4"

Materials List

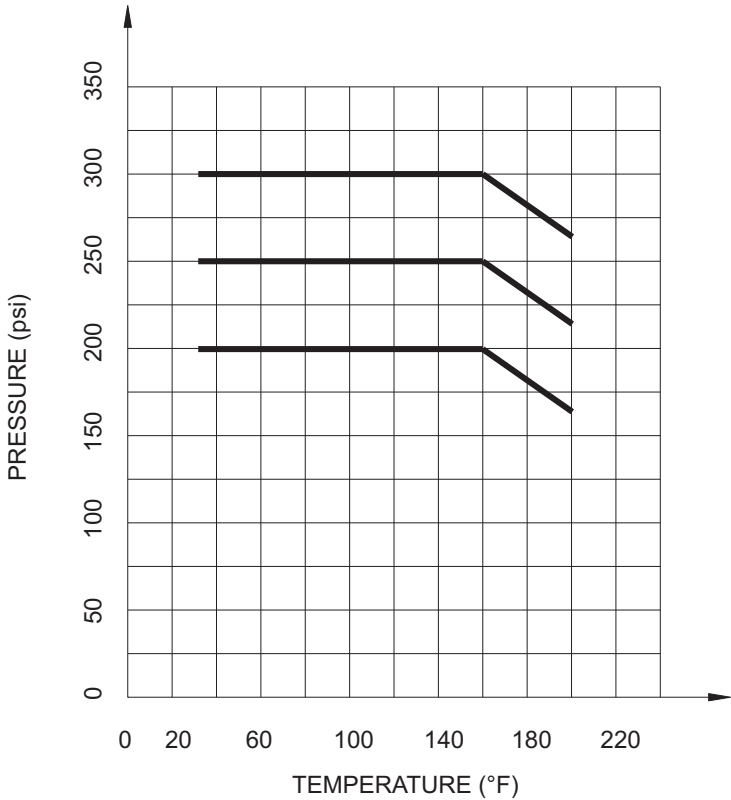
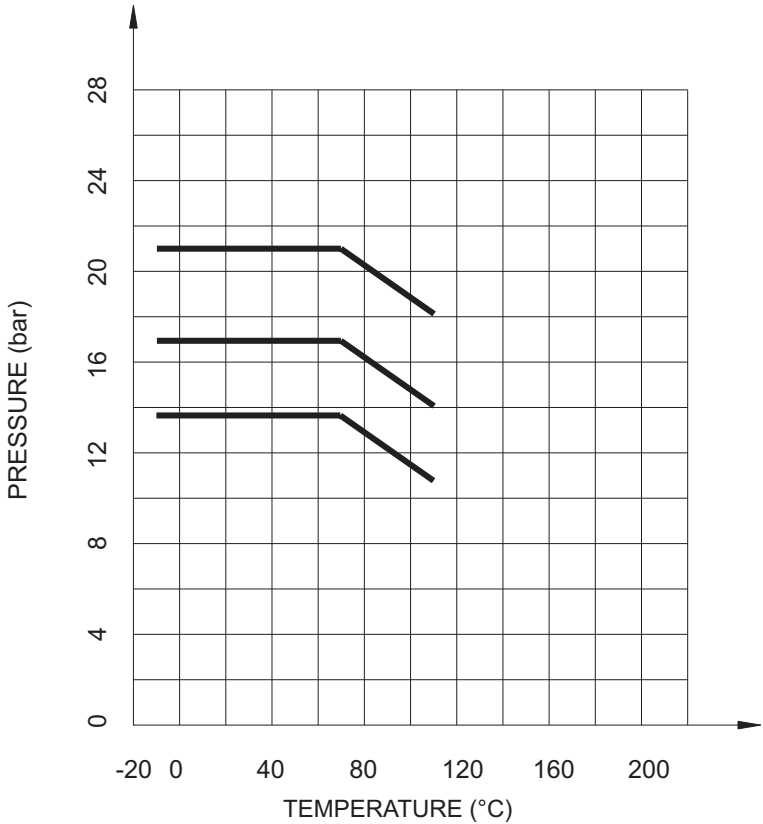
Component	Material	Specification
Body	Ductile Iron	A536 65-45-12
Cover	Ductile Iron	A536 65-45-12
Screen	Stainless Steel	AISI 304
Gasket	EPDM	
Plug	Carbon Steel	

Dimensions(mm/inch)

SIZE	mm	50	65	80	100	125	150	200	250	300
	inch	2	2 1/2	3	4	5	6	8	10	12
L	mm	230	254	272.4	308	398	472	550	654	762
	inch	9.06	10	10.71	12.13	15.67	18.58	21.65	25.75	30
H	mm	130	158	175	202	290	334	391	460	590
	inch	5.12	6.22	6.89	8	11.42	13.15	15.39	18.11	23.23
H1	mm	195	240	270	320	425	495	570	700	840
	inch	7.68	9.45	10.63	12.60	16.73	19.49	22.44	27.56	33.07
OD	mm	60.3	73.0/76.1	88.9	114.3	139.7/141.3	165.1/168.3	219.1	273	323.9
	inch	2.37	2.87/3	3.50	4.5	5.5/5.56	6.5/6.63	8.63	10.75	12.75

Y Strainer

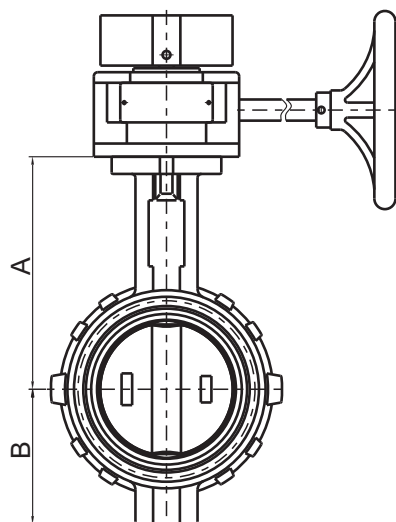
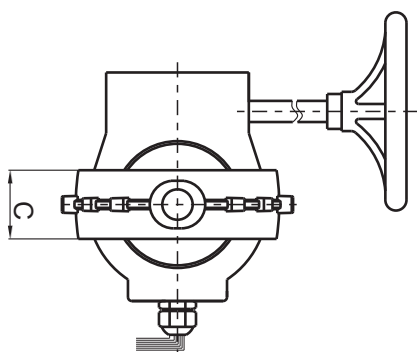
Pressure-Temperature Chart



Butterfly Valve

Resilient Seated Wafer Ends

Fig.20W-300
20W-250
20W-200



Working pressure
200PSI / 250PSI / 300PSI

Flanged Ends
ANSI B16.1 Class125/150/250,
EN1092-2 PN10/PN16/PN25
BS10 Table D/Table E

Materials List

Component	Material	Specification
Body	Ductile Iron	A536 65-45-12
Disc	Ductile Iron	
	Stainless Steel	
	Bronze	
Upper&Lower Stems	Stainless Steel	AISI 420
Worn Gear Shaft	Stainless Steel	AISI 420
Housing	Ductile Iron	A536 65-45-12
Hand Wheel	Ductile Iron	A536 65-45-12
Flag indicator	Ductile Iron	A536 65-45-12
Segment Gear	Bronze	ASTM B62
Housing Gasket	EPDM Grade"E"	
O-Rings(All)	EPDM Grade"E"	

Dimensions(mm/inch)

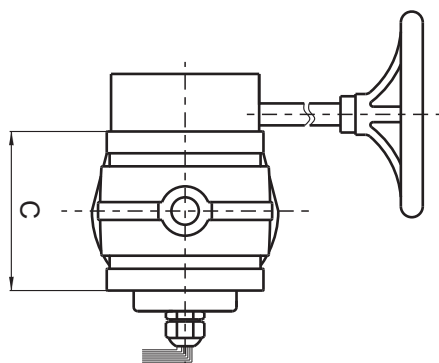
SIZE	mm	50	65	80	100	125	150	200	250	300
	inch	2	2 ¹ / ₂	3	4	5	6	8	10	12
A	mm	141	153	158	176	191	203	244	273	311
	inch	5.55	6.02	6.22	6.93	7.52	7.99	9.61	10.75	12.24
B	mm	64	72	80	102	112	128	176	206	245
	inch	2.52	2.83	3.15	4.02	4.41	5.04	6.93	8.11	9.65
C	mm	43	46	46	52	56	56	60	68	78
	inch	1.69	1.81	1.81	2.05	2.20	2.20	2.36	2.68	3.07

Factory installed UL, listed double Tamper Switches For indoor and Outdoor Use.

Butterfly Valve

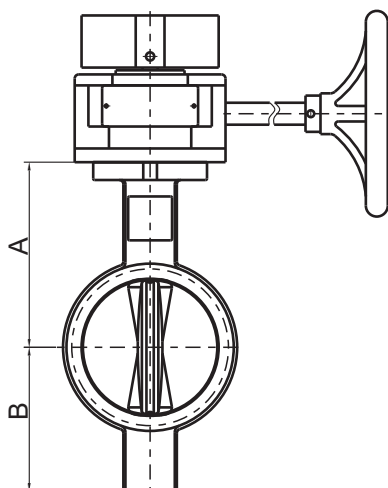
Resilient Seated Grooved Ends

Fig. 20GG-300
20GG-250
20GG-200



Working pressure
200PSI / 250PSI / 300PSI

Flanged Ends
AWWA C606



Materials List

Component	Material	Specification
Body	Ductile Iron	A536 65-45-12
Disc	Ductile Iron EPDM Coated	
Upper&Lower Stems	Stainless Steel	AISI 410
Worn Gear Shaft	Stainless Steel	AISI 410
Housing	Ductile Iron	A536 65-45-12
Hand Wheel	Ductile Iron	A536 65-45-12
Flag indicator	Ductile Iron	A536 65-45-12
Segment Gear	Bronze	ASTM B62
Housing Gasket	EPDM Grade"E"	
O-Rings(All)	EPDM Grade"E"	

Dimensions(mm/inch)

SIZE	mm	65	80	100	125	150	200	250
	inch	2 ¹ / ₂	3	4	5	6	8	10
A	mm	97	105	135	148	165	204	245
	inch	3.82	4.13	5.31	5.83	6.50	8.03	9.65
B	mm	75	85	105	110	140	170	205
	inch	2.95	3.35	4.13	4.33	5.51	6.69	8.07
C	mm	98	98	116	149	149	134	160
	inch	3.86	3.86	4.57	5.87	5.87	5.28	6.30

Factory installed UL, listed double Tamper Switches For indoor and Outdoor Use.



CAUTION

Technical data published in this catalogue have been developed from our design calculation, in-house testing, field reports provided by our customers and/or published official standard or specifications. They are good only to cover typical applications as a general guideline to users of GALA products introduced in this catalogue.

For any specific application, users are kindly requested to contact GALA for technical advice, or to carry out their own study and evaluation for providing suitability of the products to such an application. Failure to follow this request could result in property damage and/or personal injury, for which we shall not be liable.

While this catalogue has been compiled with the utmost care, we assume no responsibility for errors, impropriety or inadequacy. Any information provided in this catalogue is subject to from-time-to-time change without notice for error rectification, product discontinuation, design modification, new product introduction or any other cause that GALA considers necessary. This edition cancels all previous issues.

GALA RS INC
11200 Westheimer,
Suite 201 Houston,
TX 77042
Tel:(713)562-8136
Fax:(713)782-6803
Website:www.galars.info
E-mail:info@galars.info

Distributor: